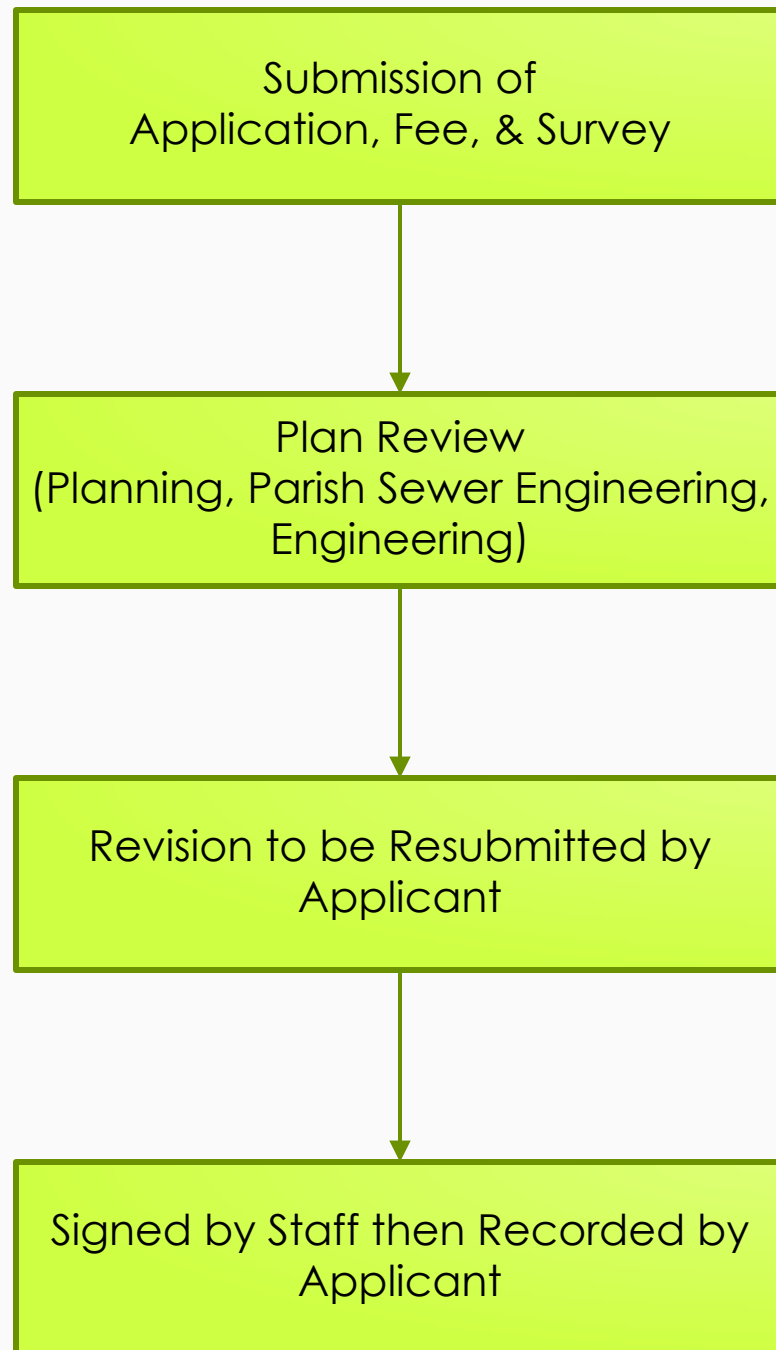
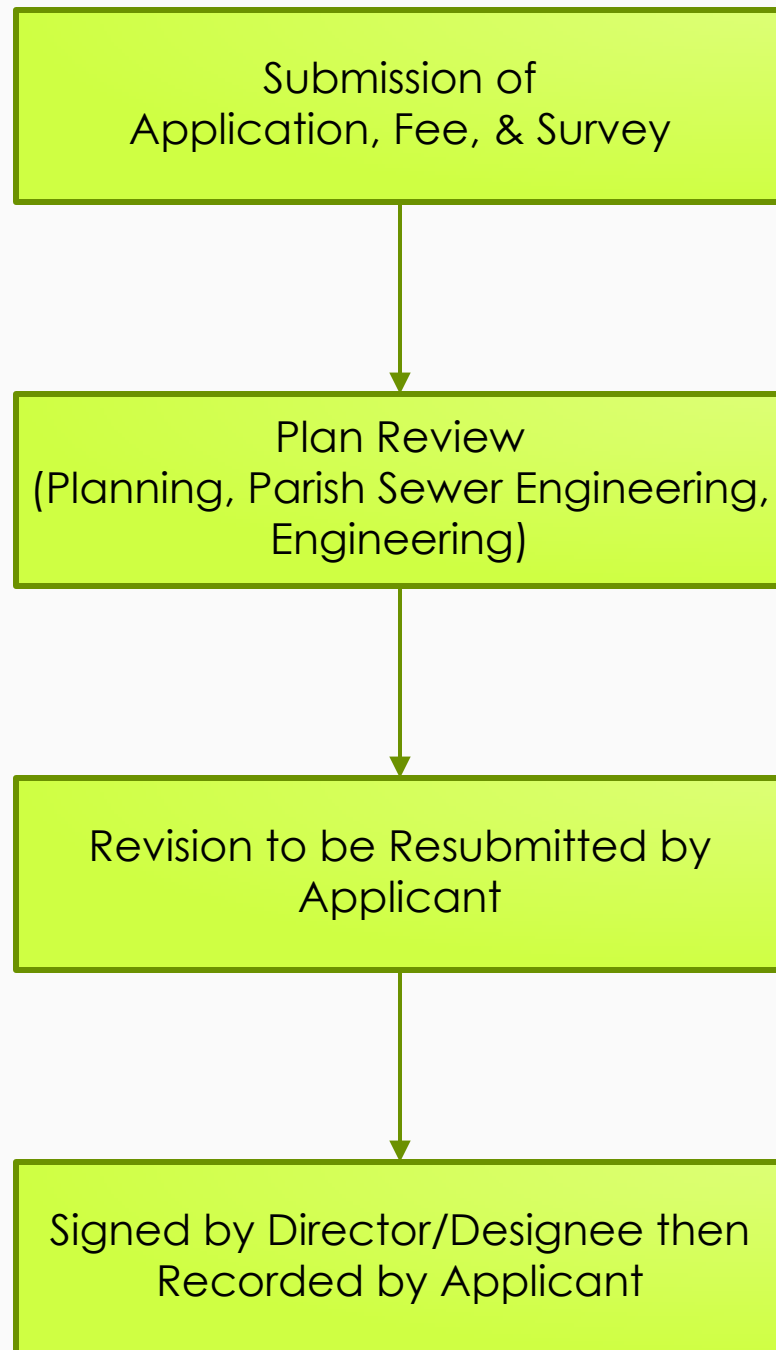


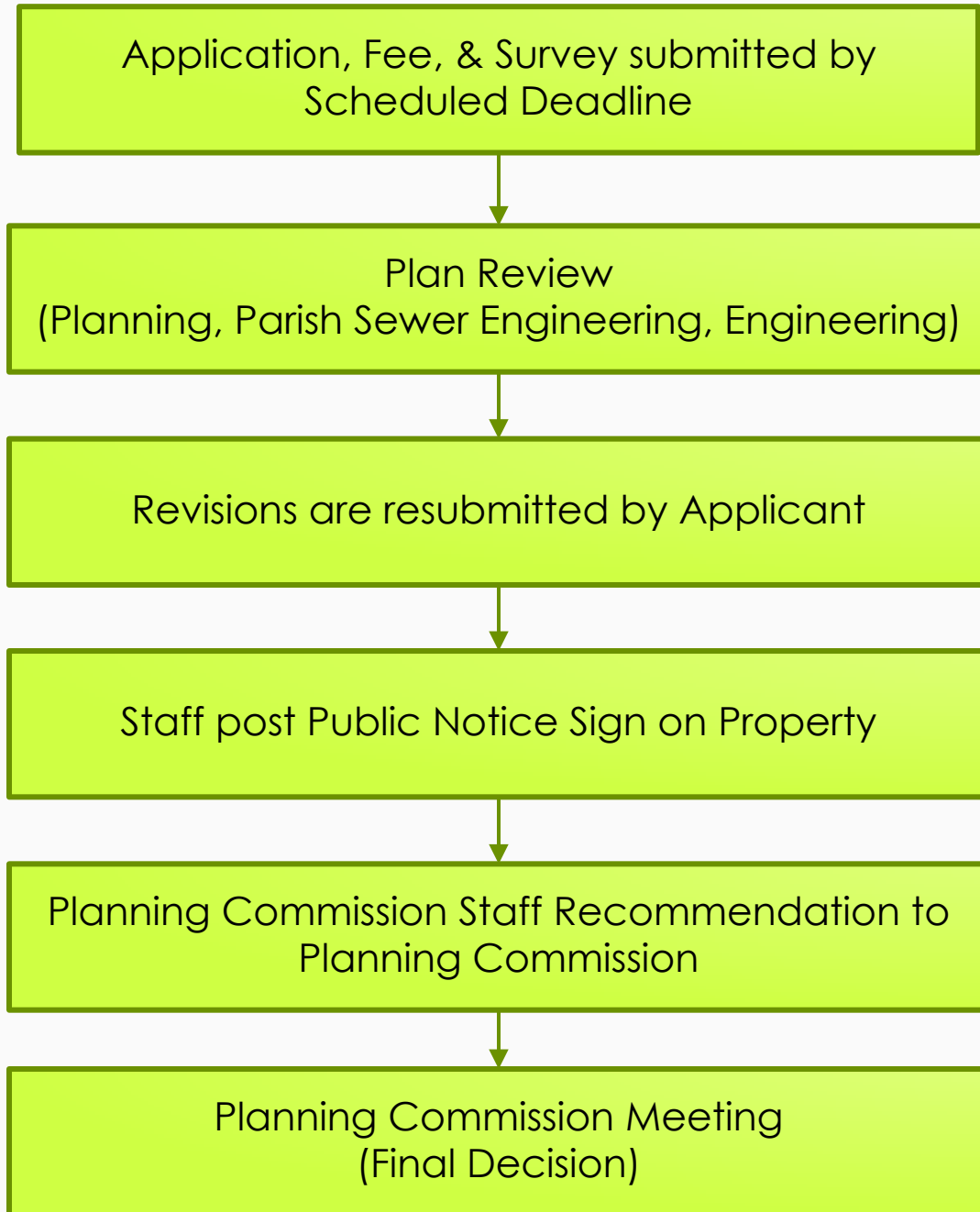
Disclaimer: This guide is not intended to be an all-inclusive list of procedures, but rather a cursory overview of the process. If you have any further questions regarding the above procedures, please contact Planning Staff at (225)262-5000



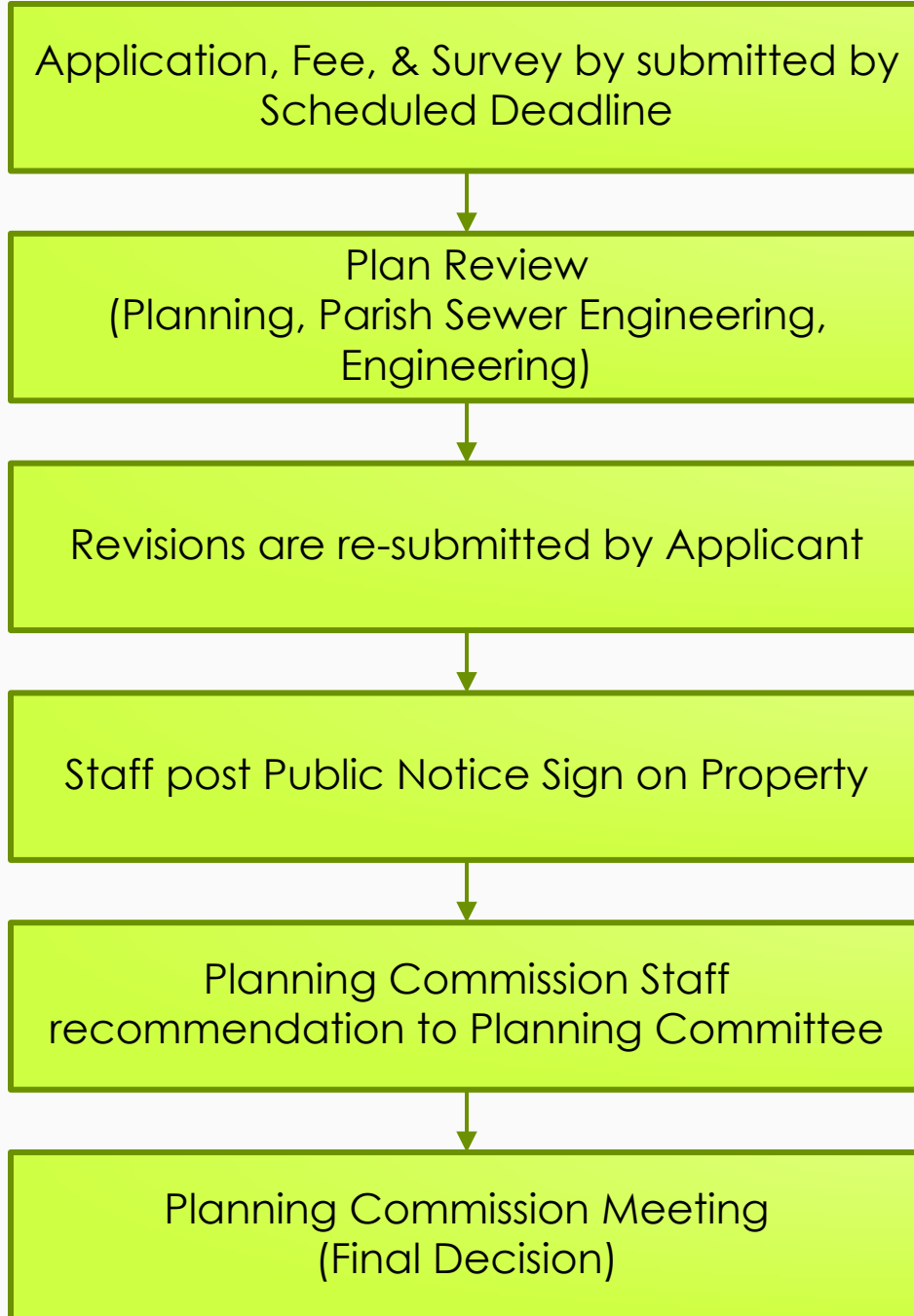
Disclaimer: This guide is not intended to be an all-inclusive list of procedures, but rather a cursory overview of the process. If you have any further questions regarding the above procedures, please contact Planning Staff at (225)262-5000



Disclaimer: This guide is not intended to be an all-inclusive list of procedures, but rather a cursory overview of the process. If you have any further questions regarding the above procedures, please contact Planning Staff at (225)262-5000



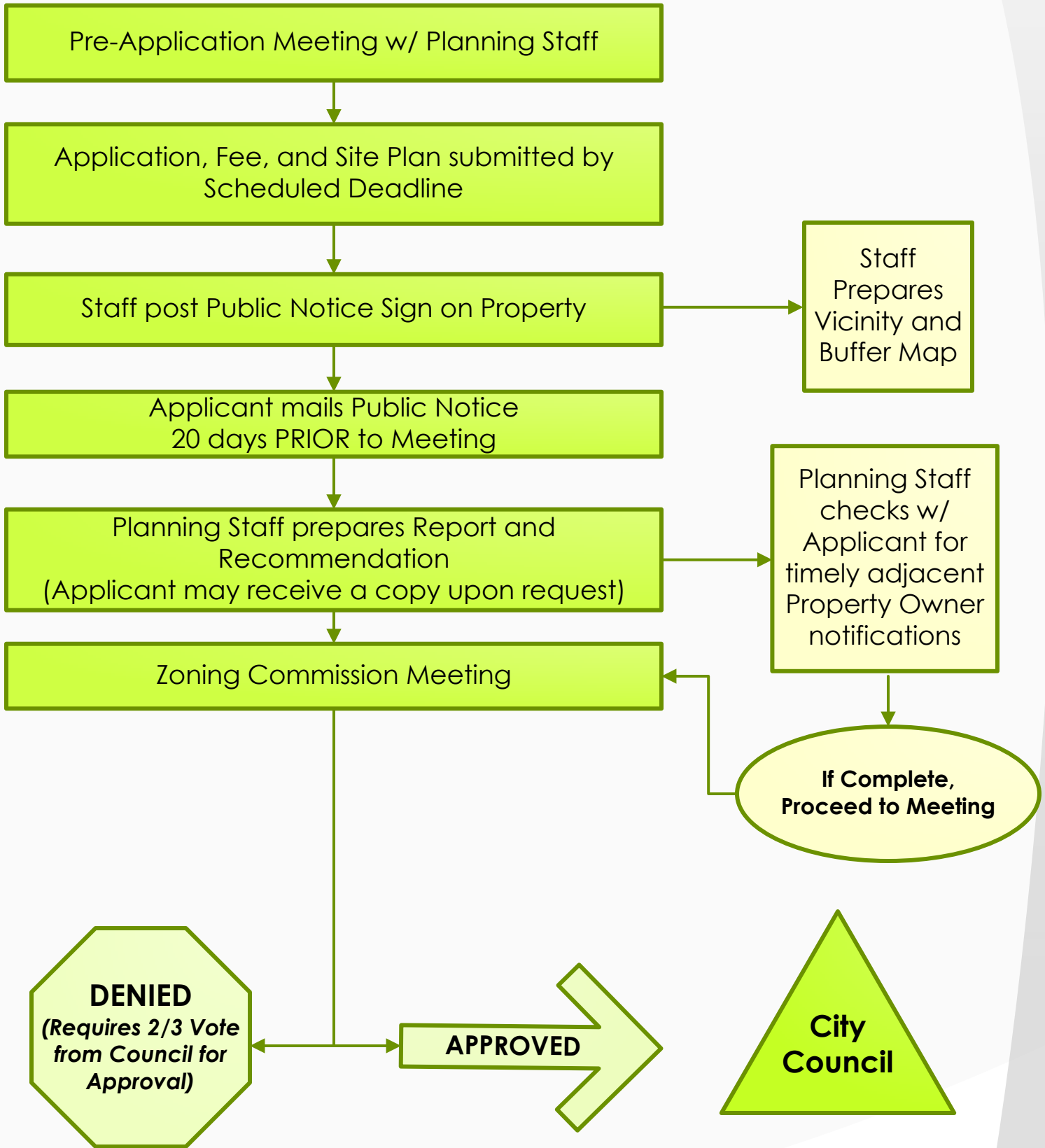
Disclaimer: This guide is not intended to be an all-inclusive list of procedures, but rather a cursory overview of the process. If you have any further questions regarding the above procedures, please contact Planning Staff at (225)262-5000



Disclaimer: This guide is not intended to be an all-inclusive list of procedures, but rather a cursory overview of the process. If you have any further questions regarding the above procedures, please contact Planning Staff at (225)262-5000

Rezoning Application

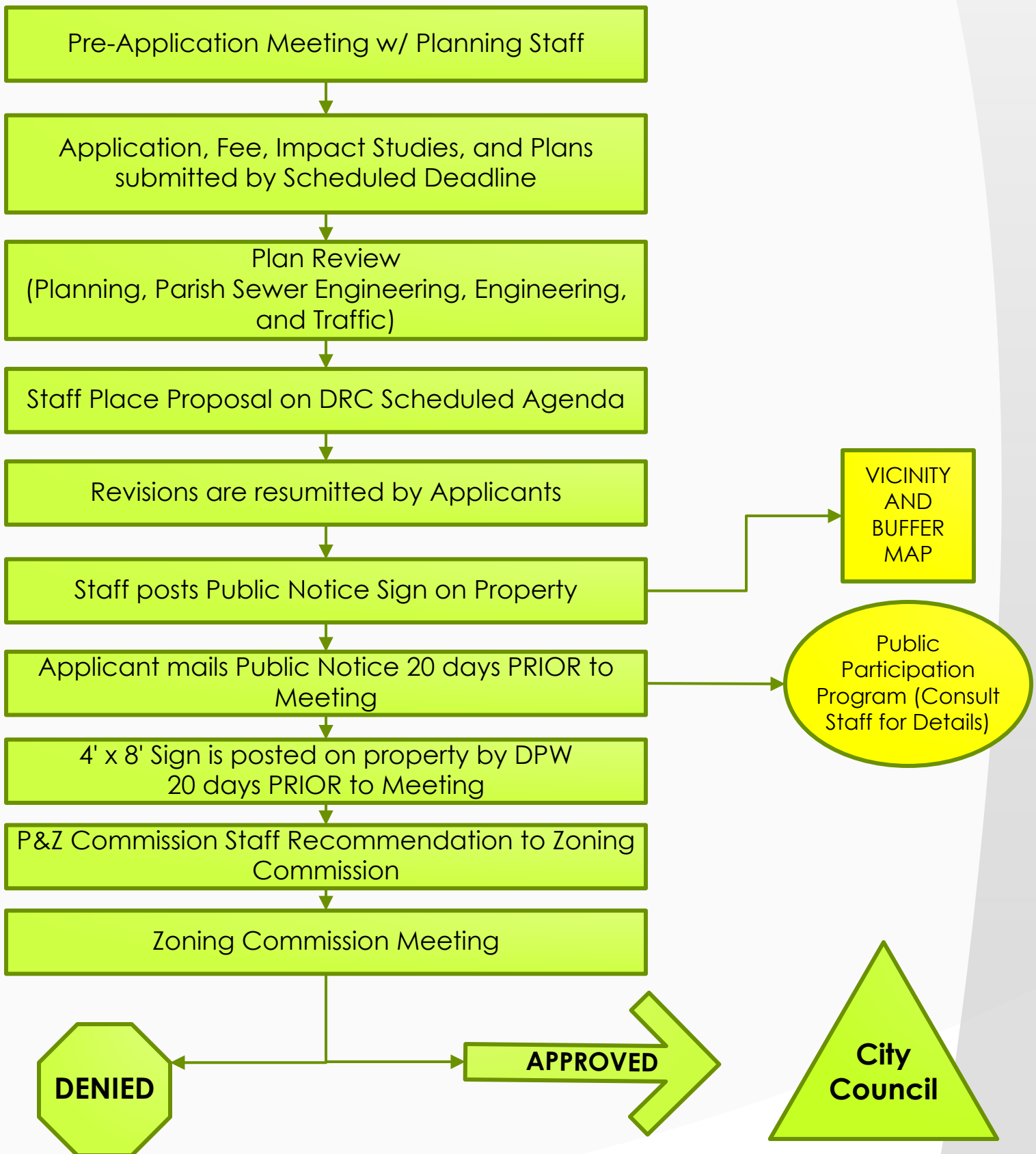
City of Central



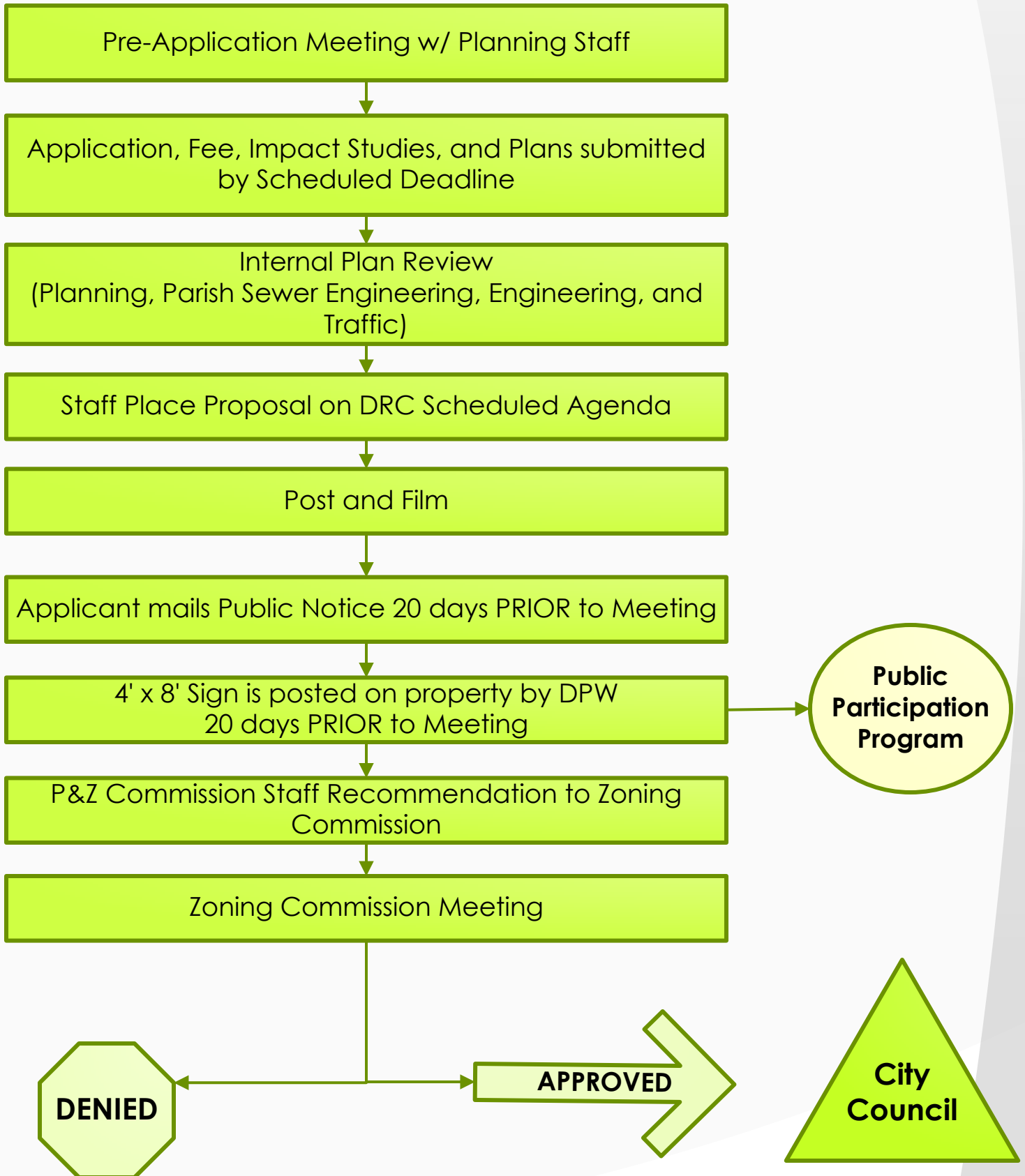
Disclaimer: This guide is not intended to be an all-inclusive list of procedures, but rather a cursory overview of the process. If you have any further questions regarding the above procedures, please contact Planning Staff at (225)262-5000

Planned Unit Development Preliminary Plan

City of Central



Disclaimer: This guide is not intended to be an all-inclusive list of procedures, but rather a cursory overview of the process. If you have any further questions regarding the above procedures, please contact Planning Staff at (225)262-5000



Disclaimer: This guide is not intended to be an all-inclusive list of procedures, but rather a cursory overview of the process. If you have any further questions regarding the above procedures, please contact Planning Staff at (225)262-5000